

SAJ

SERVICE AUX JEUNES

THE PROJECT AT ALL STEPS IN THE FOLLOW-UP

REFERRAL: WHO AND HOW?



The Service aux jeunes (SAJ) project is aimed at Laval residents between the ages of 12 and 24 who are at risk of involvement or who are already involved in a delinquent lifestyle or a criminal network. Through individual guidance and complementary to the services already present in their lives (DPJ, school, CISSSL, etc.), we offer support to young people in their various life projects in order to help them move away from crime at their own pace. In order to join the project, the young people referred must be aware that delinquency is present in their lives or in their environment, as the case may be. They must also be willing to get involved in the SAJ project or to meet with the clinical supervisor in order to receive more information. If so, referrals are made online at the following address: <https://saj-laval.com/#referral>. All follow-ups are free of charge and confidential.

EVALUATION MEETING WITH THE CLINICAL SUPERVISOR



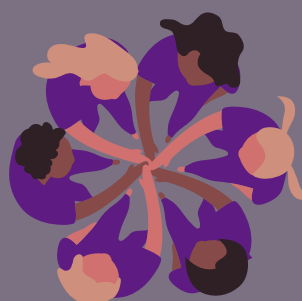
This meeting takes place between the supervisor and the referred young person in order to answer that person's questions and find out how he/she sees his/her situation. The objective of this meeting is also to get an idea of the young person's overall background and to confirm that person's interest in participating in the project. In all cases, the young person may withdraw his/her consent to take part, at any time.

ASSIGNMENT OF A SUPPORT WORKER



The support worker is a professional who is a member of TRIL's outreach work team whose role, as the key professional, is to guide the young person in the various steps he or she wishes to take (occupational, academic, housing, activities, etc.). The support worker's role is also to ensure that the young person's pace is respected and that the interventions put in place are always linked to his/her projects and aspirations. The frequency of meetings between the professionals and the young people varies according to the needs and desires of the latter.

CREATION OF THE CLINICAL COMMITTEE



Each young person in follow-up has a Clinical Committee composed of his or her support worker, the clinical supervisor and any other significant person the young person chooses to include (educators, school counsellor, parent(s), etc.). The purpose of this committee is to ensure teamwork between the various members in order to help the young person in his or her projects, prevent triangulation and highlight the efforts and successes achieved. The meetings vary in frequency depending on the needs and desires of the young person, but generally take place every 4 to 12 weeks until the end of the follow-up.

END OF SAJ FOLLOW-UP



The follow-ups are of an indefinite duration depending on each young person's needs and desires. In this sense, it is they who determine when they are ready to continue their life on their own. However, they can return to the project at any time if they feel the need.



**MORE INFORMATION
MAY BE FOUND ON OUR WEBSITE:
<https://saj-laval.com/>**

**FOR ANY QUESTIONS,
CONTACT:**

CHLOÉ ROBITAILLE
CLINICAL SUPERVISOR
450-543-0413
projetsaj.lavale@gmail.com

Avec la participation financière de :

Québec 



*in partnership with the Solidarity Alliances and the Ministère du Travail, de
l'Emploi et de la Solidarité sociale*